

# D&D Valve & Engineering Supplies (Pty) Ltd

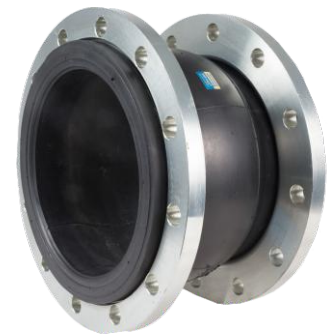
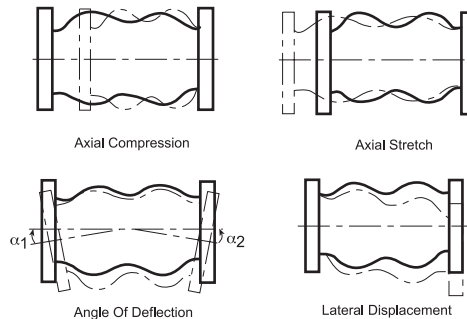
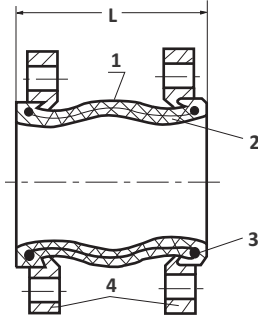
(+2711) 493-1842/3 (8 lines)

sales@ddvalve.co.za

www.ddvalve.co.za

info@ddvalve.co.za

## RUBBER EXPANSION BELLOWS



### DIMENSIONS

DN	(L) INSTALLED LENGTH (MM)		ALLOWABLE MOVEMENTS FROM NEUTRAL			
	Natural Length	Minimum Maximum Installed	Axial Compression	Axial Extension	Lateral Deflection	Angular Deflection
32	95	89 - 97	10	6	10	25°
40	95	89 - 97	10	6	10	25°
50	105	99 - 107	10	6	10	25°
65	115	107 - 118	15	8	12	25°
80	135	122 - 133	15	8	12	25°
100	135	122 - 140	20	12	16	15°
125	165	156 - 175	20	12	16	15°
150	180	167 - 185	20	12	16	15°
200	205	186 - 212	20	12	16	15°
250	240	221 - 247	30	14	25	8°
300	260	241 - 267	30	14	25	8°
350	265	246 - 273	30	14	25	8°
400	265	246 - 273	30	14	25	8°
450	265	246 - 273	30	14	25	8°
500	265	246 - 273	30	14	25	8°

Standard Material is EPDM Cover and Elastomer.

Alternative materials below on request.

Maximum Temperature: 80 Deg C

NO.	MATERIAL CODE	COVER ELASTOMER	TUBE ELASTOMER	MAXIMUM OPERATING TEMP. (°c)
1	BB	Chloro Butyl	Chloro Butyl	105
2	EE	EPDM	EPDM	80
3	NH	Neoprene	Hypalon	100
4	NN	Neoprene	Neoprene	105
5	NP	Neoprene	Nitrile (Buna)	100

NOMINAL DIAMETER		7kg/cm²	10kg/cm²	14kg/cm²	16kg/cm²
1 inch	25mm				x
1.25	32				x
1.5	40				x
2	50				x
2.5	65				x
3	80				x
4	100				x
5	125				x
6	150			x	x
8	200			x	x
10	250			x	x
12	300		x	x	x
14	350		x		
16	400	x			
18	450	x			
20	500	x			
22	550	x			
24	600	x			
28	700	x			
30	750	x			

\* Note: X use tie rods

### MATERIALS LIST

NO.	PART	MATERIAL
1	Body	EPDM
2	Lining	Nylon fabric
3	Frame	Hard steel wire
4	Flange	Galvanized Carbon Steel