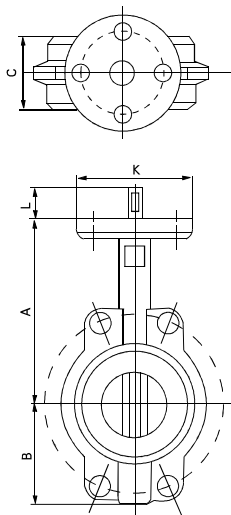


PN16 C.I. WAFER-TYPE BUTTERFLY VALVES



Standard liner: EPDM < 120°C

Optional liners: NBR < 80°C, Viton < 150°C

Suitable media: Water, air, vapours, foodstuffs
oils, acids, alkalis, salts etc.

BS5155 compliant

Suitable for fitting between BS10 Table D, ANSI 125/150,
BS4504/SABS1123 10 & 16 bar flanges

MATERIALS LIST

PART	MATERIAL
Body	Cast Iron
Disc	NPDI / SS304 / SS316
Seat	EPDM / *NBR / *VITON
Lever	Malleable Cast Iron
Bush	PTFE
Stem	SS410
O-ring	EPDM

* Optional

DIMENSIONS

DN	A	B	C	K	L
50	181	104	42	90	30
65	181	104	44	90	30
80	181	104	45	90	30
100	200	123	52	90	30
125	213	127	54	90	30
150	225	148	56	90	30
200	260	186	60	90	32
250	292	212	66	125	32
300	337	251	77	125	32
350	370	270	77	140	45
400	400	300	86	197	51
450	422	320	102	197	51
500	480	360	128	197	64
600	562	420	151	210	70